



MV-21 MC (11/08)

NEW YORK STATE DEPARTMENT OF MOTOR VEHICLES

Motorcycle Manual

Table Of Contents

MOTORCYCLE LICENSES, OWNERSHIP, SPECIAL RULES

Licenses	1
Registration, Inspection, Insurance	2
Special Rules and Required Equipment	2
Children As Passengers	3

PREPARING TO RIDE

Wear the Right Gear	4
Helmet Use	4
Helmet Selection	4
Eye and Face Protection	5
Clothing	5
Know Your Motorcycle	6
The Right Motorcycle For You	6
Borrowing and Lending	6
Know Your Motorcycle Controls	7
Check Your Motorcycle	7
Know Your Responsibilities	8

RIDE WITHIN YOUR ABILITIES

Basic Vehicle Control	10
Body Position	10
Shifting Gears	10
Braking	11
Turning	11
Keeping Your Distance	12
Lane Positions	12
Following Another Vehicle	13
Being Followed	14
Passing and Being Passed	14
Lane Sharing	15
Merging Cars	16
Cars Alongside	16
SEE	16
Intersections	18
Blind Intersections	19
Passing Parked Cars	20
Parking at the Roadside	20
Increasing Conspicuity	21
Clothing	21
Headlight	21
Signals	21
Brake Light	22
Using Your Mirrors	22
Head Checks	23

Horn	23
Riding at Night	24
Crash Avoidance	24
Quick Stops	24
Swerving or Turning Quickly	25
Riding a Curve	26
Handling Dangerous Surfaces	27
Uneven Surfaces and Obstacles	27
Slippery Surfaces	28
Railroad Tracks, Grooves and Gratings	29
Mechanical Problems	30
Tire Failure	30
Stuck Throttle	30
Wobble	30
Chain Problems	31
Engine Seizure	31
Animals	31
Flying Objects	32
Getting Off The Road	32
Carrying Passengers and Cargo	32
Equipment	32
Instructing Passengers	33
Riding With Passengers	33
Carrying Loads	33
Group Riding	34
Keep the Group Small	34
Keep the Group Together	34
Keep Your Distance	34

BEING IN SHAPE TO RIDE

Why this Information is Important	36
Alcohol and Other Drugs in Motorcycle Operation	36
Alcohol in the Body	36
Blood Alcohol Concentration	37
Alcohol and the Law	38
Consequences of Conviction	38
Minimize the Risks	39
Don't Drink	39
Don't Ride	39
Step in to Protect Friends	40
Fatigue	40

EARNING YOUR LICENSE

Knowledge and Skill	42
Knowledge Test	42
On-Cycle Skill Test	43

MOTORCYCLE SAFETY PROGRAM

Rider Education	45
-----------------------	----

Motorcycle Licenses, Ownership, Special Rules

LICENSES

To operate a motorcycle in New York State, you must have a motorcycle operator's license (Class M) or a motorcycle junior operator's license (Class MJ). You may drive a motorcycle in New York if you are a resident of another state or country and have a valid motorcycle license from there. If you are less than 18 years old, you must obey the license restrictions for both the out-of-state jurisdiction and New York State.

The instructions to apply for a driver license, including a motorcycle license, are provided in Chapter One of the NYS Driver's Manual. You should study that manual in addition to this one, even if you already have a license. Your motorcycle license written test will be based on information from both manuals. The Driver's Manual also contains the junior operator and learner permit restrictions, information on license suspension and revocation and vehicle registration, title and insurance. The Driver's Manual describes the junior operator and learner permit restrictions, information about license suspension and revocation, and vehicle registration, title and insurance. Junior motorcycle operators are also subject to the New York State graduated licensing requirements that apply to other drivers.

In addition to the information in the Driver's Manual, motorcycle operators must be aware that:

- When a motorcycle learner is practicing, the supervising driver must hold a valid motorcycle license, be at least 21 years old and remain within 1/4 mile of the learner at all times. Additional restrictions apply to junior

learners. The supervising driver need not ride on the learner's motorcycle, but only the supervising driver may be a passenger. The learner and supervising driver should remain within sight of one another at all times and discuss the learner's performance after practice. We recommend at least 30 hours of practice, with at least 10 in moderate to heavy traffic.

- Your road test will include left and right circles and figure-eights on public streets. In addition to normal driving maneuvers, you must be able to accomplish these while being alert for other traffic.

If you take the test on a three-wheeler, your motorcycle license will be restricted to driving three-wheelers.

- You must provide road test transportation for the license examiner in a properly registered, and inspected car or truck, and a driver at least 21 years old who is licensed to drive both this vehicle and the motorcycle you will drive during the test.
- If you already have a driver license, your current class and motorcycle class will both be listed on one license document (for example, Class DM).
- If you already have another class of driver license and a motorcycle operator's learner permit, the DMV will waive your motorcycle road test if you complete the Motorcycle Safety Foundation's (MSF) Motorcycle Basic RiderCourse®.

To qualify for the waiver, the course must be given by an approved training provider in New York State. For information about the nearest MSF course, call 1-800- 446-9227.

REGISTRATION, INSPECTION, INSURANCE

Unlike most other motor vehicles, motorcycles are registered for one year rather than two, and all motorcycle registrations expire on April 30.

Motorcycles must be inspected at least once every 12 months at a station licensed by the DMV to perform motorcycle safety inspections. The station will display a yellow and black sign reading "Official NYS Motorcycle Inspection Station." Dealerships must inspect motorcycles prior to delivery. If purchased in a private sale, you will be given 10 days from the date of registration to have the motorcycle inspected.

Motorcycles are not included in the "no fault" insurance provisions that cover other motor vehicles in New York State. Motorcyclists owners and operators should know and understand the extent and limitations of their vehicle's insurance coverage for themselves and their passengers.

Unlike other motor vehicles, liability insurance may be terminated on a motorcycle without first turning the plate in at a DMV office. This makes it easier to put the motorcycle back on the road after winter storage. However, under no circumstances may a motorcycle be operated on public highways without liability coverage in effect. This also applies to motorcycles registered out-of-state.

SPECIAL RULES AND REQUIRED EQUIPMENT

All motorcycle operators and passengers must wear approved motorcycle helmets as defined by USDOT federal motor vehicle safety standards (FMVSS 218). To improve the motorcyclist's visibility, we recommend that helmets have at least four square inches of reflective material on both sides.

All motorcycle operators must wear approved eye protection even if the motorcycle is equipped with a windshield. Any windshield must also be of an approved type. Prescription or made-to-order safety glasses may be used if the user can present written certification that they meet DMV standards. The eye protection must be manufactured in conformity with the regulations established by the American National Standard Institute (ANSI - Z87.1). However, the DMV recommends approved goggles or a face-shield for full protection.

The headlight and taillight of the motorcycle must be on at all times when operating on the road.

Motorcyclists have the right to the use of a full lane and may ride no more than two abreast in a single lane. You may not ride abreast of another vehicle in the same lane, between lanes or between traffic and parked cars. Motorcyclists are subject to all applicable rules of the road, including signaling all turns and lane changes and passing only when and where permitted for other vehicles.

CHILDREN AS PASSENGERS

A child of any age may be a motorcycle passenger in New York State. Every passenger must wear a DOT-approved motorcycle helmet, and ride upon a permanent, regular seat on a motorcycle designed to carry more than one person. The passenger must sit face forward, one leg on each side of the motorcycle, with each foot reaching a foot peg, unless he or she is seated in a properly attached sidecar. It is illegal for an operator to carry a passenger, or for the passenger to ride, in a position that will interfere with the operation or control of the motorcycle or the vision of the operator.

A MOTORCYCLE MUST HAVE ALL OF THE FOLLOWING EQUIPMENT IN GOOD WORKING ORDER:


- Approved lights, including headlight, taillight, stop lamp and license plate lamp, at least one red reflector on the rear and directional signals if the motorcycle was originally equipped with directionals or is a 1985 or newer model
- Brakes, on 1971 and newer motorcycles brakes are required on both wheels
- A horn or other warning device
- At least one rearview mirror mounted on a handle bar, although mirrors on both handlebars are strongly recommended
- A suitable muffler, "cutouts" or mufflers with removable baffles are prohibited

- Handlebars no higher than the shoulder height of the operator
- A seat for the operator and a passenger seat in the rear if a passenger is carried (no more than one passenger is permitted)

For more information, please see "Equipment Required for Motorcycles (Including Limited Use Motorcycles)," form MV-529-B, available from the DMV Internet Office, by request from a DMV Call Center, and at any motor vehicle office.

MOPED OPERATORS

Limited use motorcycles, often called mopeds, are low speed, two-wheeled vehicles intended for limited use on public highways. There are three different classes of mopeds based on maximum performance speed. The chart below outlines the requirements for moped operation. Class B and C mopeds may be driven only in the right lane of traffic, as far to the right as possible. Class A mopeds are allowed to drive in any lane, and any portion of a lane. Mopeds are not permitted on expressways or other controlled access highways unless posted signs permit it. When approaching a moped, use the same precautions and care you would when approaching a bicyclist.

 **NOTE:** The remainder of this manual is based on the model Motorcycle Operator Manual developed by the Motorcycle Safety Foundation (MSF). The material is copyrighted by MSF and is used with permission.

See page 48 of this manual for the GUIDE TO LIMITED USE MOTORCYCLE (MOPEDS) OPERATION chart.

Preparing To Ride

What you do before you start a trip goes a long way toward determining whether or not you will get where you want to go safely. Before taking off on any trip, a safe rider makes a point to:

- 1. Wear the right gear.**
- 2. Become familiar with the motorcycle.**
- 3. Check the motorcycle equipment.**
- 4. Be a responsible rider.**

WEAR THE RIGHT GEAR

When you ride, your gear is “right” if it protects you. In any crash, you have a far better chance of avoiding serious injury if you wear:

- An approved helmet.
- Face or eye protection.
- Protective clothing.

HELMET USE

Crashes are not rare events — particularly among beginning riders. And one out of every five motorcycle crashes results in head or neck injuries. Head injuries are just as severe as neck injuries — and far more common. Crash analysis shows that head and neck injuries account for a majority of serious and fatal injuries to motorcyclists. Research also shows that, with few exceptions, head and neck injuries are reduced by the proper wearing of an approved helmet.

Some riders do not wear helmets because they think helmets will limit their view to the sides. Others wear helmets only on long trips or when riding at high speeds. Here are some facts to consider:

- An approved helmet lets you see as far to the sides as necessary. A study of more than 900 motorcycle crashes, where 40% of the riders wore helmets, did not find even one case in which a helmet kept a rider from spotting danger.
- Most crashes happen on short trips (less than five miles long), just a few minutes after starting out.
- Most riders are riding slower than 30 mph when a crash occurs. At these speeds, helmets can cut both the number and the severity of head injuries by half.

No matter what the speed, helmeted riders are three times more likely to survive head injuries than those not wearing helmets at the time of the crash.

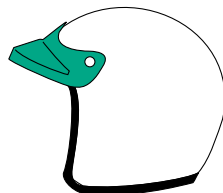
HELMET SELECTION

There are two primary types of helmets, providing two different levels of coverage: three-quarter and full face.

Whichever style you choose, you can get the most protection by making sure that the helmet:

- Meets U.S. Department of Transportation (DOT) and state standards. (Helmets with a label from the Snell Memorial Foundation gives you an added assurance of quality.)
- Fits snugly, all the way around.
- Has no obvious defects such as cracks, loose padding or frayed straps.

HELMETS



Whatever helmet you decide on, keep it securely fastened on your head when you ride. Otherwise, if you are involved in a crash, it is likely to fly off your head before it gets a chance to protect you.

EYE AND FACE PROTECTION

A plastic shatter-resistant faceshield can help protect your whole face in a crash. It also protects you from wind, dust, dirt, rain, insects, and pebbles thrown up from cars ahead. These problems are very distracting and can be painful. If you have to deal with them, you cannot devote your full attention to the road.

Goggles protect your eyes, though they won't protect the rest of your face like a faceshield does. A windshield is not a substitute for a faceshield or goggles. Most windshields will not protect your eyes from the wind. Neither will eyeglasses or sunglasses. Glasses will not keep your eyes from watering, and they might blow off when you turn your head while riding.

To be effective, eye or faceshield protection must:

- Be free of scratches.
- Be resistant to penetration.

- Give a clear view to either side.
- Fasten securely, so it does not blow off.
- Permit air to pass through, to reduce fogging.
- Permit enough room for eyeglasses or sunglasses, if needed.

Tinted eye protection should not be worn at night or any other time when little light is available.

CLOTHING

The right clothing protects you in a collision. It also provides comfort, as well as protection from heat, cold, debris, and hot and moving parts of the motorcycle.

- Jacket and pants should cover arms and legs completely. They should fit snugly enough to keep from flapping in the wind, yet loosely enough to move freely. Leather offers the most protection. Sturdy synthetic material provides a lot of protection as well. Wear a jacket even in warm weather to prevent dehydration. Many jackets are designed to protect without getting you overheated, even on summer days.
- Boots or shoes should be high and sturdy enough to cover your

ankles and give them support. Soles should be made of hard, durable slip resistant material. Keep heels short so they do not catch on rough surfaces. Tuck laces in so they won't catch on your motorcycle.

- Gloves allow a better grip and help protect your hands in a crash. Your gloves should be made of leather or similar durable material.

In cold or wet weather, your clothes should keep you warm and dry, as well as protect you from injury. You cannot control a motorcycle well if you are numb. Riding for long periods in cold weather can cause severe chill and fatigue. A winter jacket should resist wind and fit snugly at the neck, wrists, and waist. Good-quality rainsuits designed for motorcycle riding resist tearing apart or ballooning up at high speeds.

KNOW YOUR MOTORCYCLE

There are plenty of things on the highway that can cause you trouble. Your motorcycle should not be one of them. To make sure that your motorcycle will not let you down:

- Read the owner's manual first.
- Start with the right motorcycle for you.
- Be familiar with the motorcycle controls.
- Check the motorcycle before every ride.
- Keep it in safe riding condition between rides.
- Avoid add-ons and modifications that make your motorcycle more difficult to handle.

THE RIGHT MOTORCYCLE FOR YOU

First, make sure your motorcycle is right for you. It should "fit" you. Your feet should reach the ground while you are seated on the motorcycle.

At minimum, your street-legal motorcycle should have:

- Headlight, taillight and brakelight.
- Front and rear brakes.
- Turn signals.
- Horn.
- NYS law requires only one mirror, though two mirrors are recommended.

BORROWING AND LENDING

Borrowers and lenders of motorcycles, beware. Crashes are fairly common among beginning riders — especially in the first months of riding. Riding an unfamiliar motorcycle adds to the problem.

If you borrow a motorcycle, make sure you have its insurance identification card or that it is properly insured. Practice riding it in a controlled area. And if you lend your motorcycle to friends, make sure they are licensed and know how to ride before allowing them out into traffic.

1 Test Yourself

A plastic shatter-resistant face shield:

- A. Is not necessary if you have a wind shield.
- B. Only protects your eyes.
- C. Helps protect your whole face.
- D. Does not protect your face as well as goggles.

Answer - page 42

No matter how experienced you may be, ride extra carefully on any motorcycle that's new or unfamiliar to you. More than half of all crashes occur on motorcycles ridden by the operator for less than six months.

KNOW YOUR MOTORCYCLE CONTROLS

Make sure you are completely familiar with the motorcycle before you take it out on the street. Be sure to review the owner's manual. This is particularly important if you are riding a borrowed motorcycle.

If you are going to use an unfamiliar motorcycle:

- Make all the checks you would on your own motorcycle.
- Find out where everything is, particularly the turn signals, horn, headlight switch, fuel-control valve, and engine cut-off switch. Find and operate these items without having to look for them.
- Know the gear pattern. Work the throttle, clutch, and brakes a few times before you start riding. All controls react a little differently.
- Ride very cautiously and be aware of surroundings. Accelerate gently, take turns more slowly, and leave extra room for stopping.

CHECK YOUR MOTORCYCLE

A motorcycle needs more frequent attention than a car.

A minor technical failure in a car seldom leads to anything more than an

inconvenience for the driver.

If something is wrong with the motorcycle, you'll want to find out about it before you get in traffic. Make a complete check of your motorcycle before every ride.

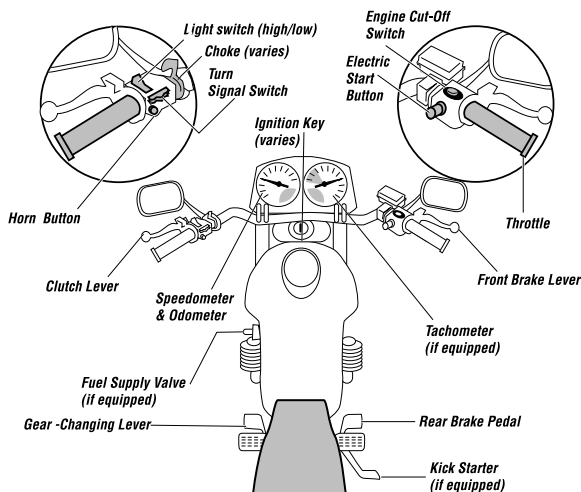
Before mounting the motorcycle make the following checks:

- Tires — Check the air pressure, general wear and tread.
- Fluids — Oil and fluid levels. At a minimum, check hydraulic fluids and coolants weekly. Look under the motorcycle for signs of an oil or gas leak.
- Headlights and Taillight — Check them both. Test your switch to make sure both high and low beams are working.
- Turn Signals — Turn on both right and left turn signals. Make sure all lights are working properly.
- Brake Light — Try both brake controls, and make sure each one turns on the brake light.

Once you have mounted the motorcycle, complete the following checks before starting out:

- Clutch and Throttle — Make sure they work smoothly. The throttle should snap back when you let go. The clutch should feel tight and smooth.
- Mirrors — Clean and adjust both mirrors before starting. It is difficult to ride with one hand while you try to adjust a mirror. Adjust each mirror so you can see the lane behind and

MOTORCYCLE CONTROLS



as much as possible of the lane next to you. When properly adjusted, a mirror may show the edge of your arm or shoulder — but it is the road behind and to the side that is most important.

- **Brakes** — Try the front and rear brake levers one at a time. Make sure each one feels firm and holds the motorcycle when the brake is fully applied.
- **Horn** — Try the horn. Make sure it works.

In addition to the checks you should make before every trip, check the following items at least once a week: Wheels, cables, fasteners, and fluid checks. Follow your owner's manual to get recommendations.

KNOW YOUR RESPONSIBILITIES

“Accident” implies an unforeseen event that occurs without anyone's fault or negligence. Most often in traffic, that is not the case. In fact, most drivers involved in a crash can usually claim some responsibility for what takes place.

Consider a situation where someone decides to try to squeeze through an intersection on a yellow light turning red. Your light turns green. You pull into the intersection without checking for possible latecomers. That is all it takes for

2 Test Yourself

More than half of all crashes:

- A. Occur at speeds greater than 35 mph.
- B. Happen at night.
- C. Are caused by worn tires.
- D. Involve riders who have ridden their motorcycles less than six months.

Answer - page 42

the two of you to tangle. It was the driver's responsibility to stop. And it was your responsibility to look before pulling out. Neither of you held up your end of the deal. Just because someone else is the first to start the chain of events leading to a crash, you are not free of responsibility.

As a rider you cannot be sure that other operators will see you or yield the right of way. To lessen your chances of a crash occurring:

- Be visible — wear proper clothing, use your headlight, ride in the best lane position to see and be seen.
- Communicate your intentions — use the proper signals, brake light, and lane position.
- Maintain an adequate space cushion — following, being followed, lane sharing, passing and being passed.
- Scan your path of travel 12 seconds ahead.
- Identify and separate multiple hazards.
- Be prepared to act — remain alert and know how to carry out proper crash-avoidance skills.

Blame does not matter when someone is injured in a crash. There is rarely a single cause of any crash. The ability to ride aware, make critical decisions, and carry them out separates responsible riders from all the rest. Remember, it is up to you to keep from being the cause of, or an unprepared participant in, any crash.

Ride Within Your Abilities

BASIC VEHICLE CONTROL

This manual cannot teach you how to control direction, speed, or balance. That's something you can learn only through practice. But control begins with knowing your abilities and riding within them, along with knowing and obeying the rules of the road.

BODY POSITION

To control a motorcycle well:

- **Posture** — Sit so you can use your arms to steer the motorcycle rather than to hold yourself up.
- **Seat** — Sit far enough forward so that arms are slightly bent when you hold the handlegrips. Bending your arms permits you to press on the handlebars without having to stretch.
- **Hands** — Hold the handlegrips firmly to keep your grip over rough surfaces. Start with your right wrist flat. This will help you keep from accidentally using too much throttle. Also, adjust the handlebars so your hands are even with or below your elbows. This permits you to use the proper muscles for precision steering.

- **Knees** — Keep your knees against the gas tank to help you keep your balance as the motorcycle turns.
- **Feet** — Keep your feet firmly on the footpegs to maintain balance. Do not drag your feet. If your foot catches on something, you can be injured and it could affect your control of the motorcycle. Keep your feet near the controls so you can get to them fast if needed. Also, do not let your toes point downward — they may get caught between the road and the footpegs.

SHIFTING GEARS

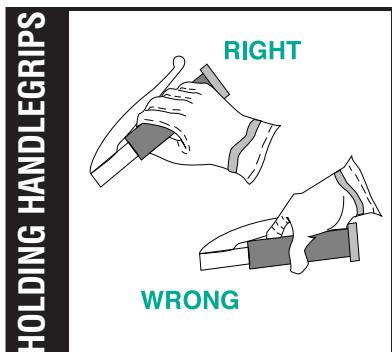
There is more to shifting gears than simply getting the motorcycle to pick up speed smoothly.

Learning to use the gears when downshifting, turning, or starting on hills is important for safe motorcycle operation.

Shift down through the gears with the clutch as you slow or stop. Remain in first gear while you are stopped so that you can move out quickly if you need to.

Make certain you are riding slowly enough when you shift into a lower gear. If not, the motorcycle will lurch, and the rear wheel may skid. When riding downhill or shifting into first gear you may need to use the brakes to slow enough before downshifting safely. Work towards a smooth, even clutch release, especially when downshifting.

It is best to change gears before entering a turn. However, sometimes shifting while in the turn is necessary. If so, remember to do so smoothly.



A sudden change in power to the rear wheel can cause a skid.

BRAKING

Your motorcycle has two brakes: one each for the front and rear wheel. Use both of them at the same time. The front brake is more powerful and can provide at least three-quarters of your total stopping power. The front brake is safe to use if you use it properly.

Remember:

- Use both brakes every time you slow or stop. Using both brakes for even “normal” stops will permit you to develop the proper habit or skill of using both brakes properly in an emergency. Squeeze the front brake and press down on the rear. Grabbing at the front brake or jamming down on the rear can cause the brakes to lock, resulting in control problems.
- If you know the technique, using both brakes in a turn is possible, although it should be done very carefully. When leaning the motorcycle some of the traction is used for cornering. Less traction is available for stopping. A skid can occur if you apply too much brake. Also, using the front brake incorrectly on a slippery surface may be hazardous. Use caution and squeeze the brake lever, never grab.
- Some motorcycles have integrated braking systems that link the front and rear brakes together by applying the rear brake pedal. (Consult the owner's manual for a detailed explanation on the operation and effective use of these systems.)

TURNING

Riders often try to take curves or turns too fast. When they cannot hold the turn, they end up crossing into another lane of traffic or going off the road. Or, they overreact and brake too hard, causing a skid and loss of control. Approach turns and curves with caution.

Use four steps for better control:

■ **SLOW**

■ **LOOK**

■ **LEAN**

■ **ROLL**

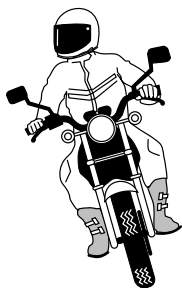
SLOW — Reduce speed before the turn by closing the throttle and, if necessary, applying both brakes.

LOOK — Look through the turn to where you want to go. Turn just your head, not your shoulders, and keep your eyes level with the horizon.

LEAN — To turn, the motorcycle must lean. To lean the motorcycle, press on the handgrip in the direction of the turn. Press left — lean left — go left. Press right — lean right — go right. Higher speeds and/or tighter turns require the motorcycle to lean more.

ROLL — Roll on the throttle through the turn to stabilize suspension. Maintain steady speed or accelerate gradually through the turn. This will help keep the motorcycle stable.

NORMAL TURNING



In normal turns, the rider and the motorcycle should lean together at the same angle.

SLOW TURNING



In slow tight turns, counterbalance by leaning the motorcycle only and keeping your body straight.

KEEPING YOUR DISTANCE

The best protection you can have is distance — a “cushion of space” — all around your motorcycle. If someone else makes a mistake, distance permits you:

- Time to react.
- Space to maneuver.

LANE POSITIONS

In some ways the size of the motorcycle

can work to your advantage. Each traffic lane gives a motorcycle three paths of travel, as indicated in the illustration.

Your lane position should:

- Increase your ability to see and be seen.
- Avoid others' blind spots.
- Avoid surface hazards.
- Protect your lane from other drivers.
- Communicate your intentions.
- Avoid wind blast from other vehicles.
- Provide an escape route.

Select the appropriate path to maximize your space cushion and make yourself more easily seen by others on the road.

In general, there is no single best position for riders to be seen and to maintain a space cushion around the motorcycle. No portion of the lane need be avoided — including the center.

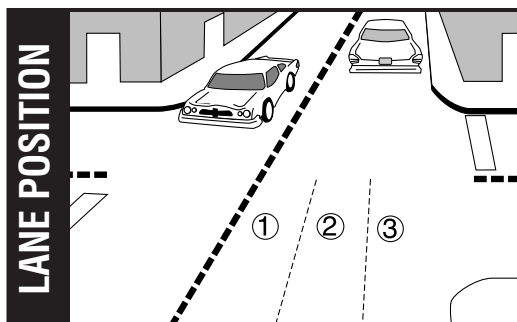
Position yourself in the portion of the lane where you are most likely to be seen and you can maintain a space cushion around you. Change position as traffic situations change. Ride in path 2 or 3 if vehicles and other potential problems are on your left only. Remain in path 1 or 2 if

3 Test Yourself

When riding, you should:

- A. Turn your head and shoulders to look through turns.
- B. Keep your arms straight.
- C. Keep your knees away from the gas tank.
- D. Turn just your head and eyes to look where you are going.

Answer - page 42



hazards are on your right only. If vehicles are being operated on both sides of you, the center of the lane, path 2, is usually your best option.

The oily strip in the center portion that collects drippings from cars is usually no more than two feet wide. Unless the road is wet, the average center strip permits adequate traction to ride on safely. You can operate to the left or right of the grease strip and still be within the center portion of the traffic lane. Avoid riding on big buildups of oil and grease usually found at busy intersections or toll booths.

FOLLOWING ANOTHER VEHICLE

“Following too closely” is a major factor in crashes involving motorcyclists. In traffic, motorcycles need as much distance to stop as cars. Normally, a minimum of two seconds distance should be maintained behind the vehicle ahead.

To gauge your following distance:

- Pick out a marker, such as a pavement marking or lamppost, on or near the road ahead.
- When the rear bumper of the vehicle ahead passes the marker, count off the seconds: “one-thousand-one,

one-thousand-two.”

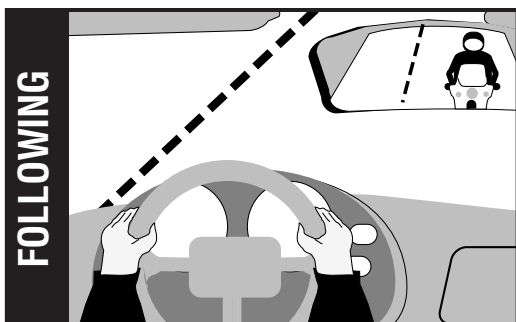
- If you reach the marker before you reach “two,” you are following too closely.

A two-second following distance leaves a minimum amount of space to stop or swerve if the driver ahead suddenly stops. It also permits a better view of potholes and other hazards in the road.

A larger cushion of space is needed if your motorcycle will take longer than normal to stop. If the pavement is slippery, if you cannot see through the vehicle ahead, or if traffic is heavy and someone may squeeze in front of you, open up a three second or more following distance.

Keep well behind the vehicle ahead even when you are stopped. This will make it easier to get out of the way if someone bears down on you from behind. It will also give you a cushion of space if the vehicle ahead starts to back up for some reason.

When behind a car, ride where the driver can see you in the rearview mirror. Riding in the center portion of the lane should put your image in the middle of the rearview mirror — where a driver is most likely to see you.



Riding at the far side of a lane may permit a driver to see you in a sideview mirror. But remember that most drivers do not look at their sideview mirrors nearly as often as they check the rearview mirror. If the traffic situation allows, the center portion of the lane is usually the best place for you to be seen by the drivers ahead and to prevent lane sharing by others.

BEING FOLLOWED

Speeding up to lose someone following too closely only ends up with someone tailgating you at a higher speed.

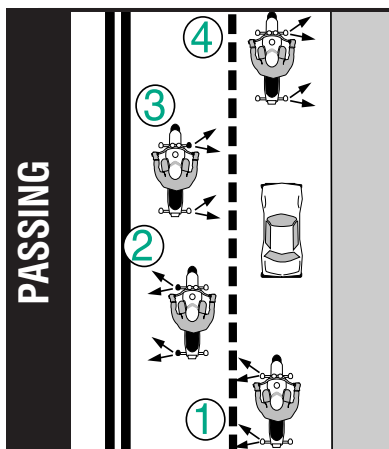
A better way to handle tailgaters is to get them in front of you. When someone is following too closely, change lanes and let them pass. If you cannot do this, slow down and open up extra space ahead of you to allow room for both you and the tailgater to stop. This will also encourage them to pass. If they do not pass, you will have given yourself and the tailgater more time and space to react in case an emergency does develop ahead.

PASSING AND BEING PASSED

Passing and being passed by another vehicle is not much different than with a car. However, visibility is more critical. Be sure other drivers see you, and that you see potential hazards.

PASSING

1. Ride in the left portion of the lane at a safe following distance to increase your line of sight and make you more visible. Signal and check for oncoming traffic. Use your mirrors and turn your head to look for traffic behind.



2. When safe, move into the left lane and accelerate. Select a lane position that does not crowd the car you are passing and provides space to avoid hazards in your lane.
3. Ride through the blind spot as quickly as possible.
4. Signal again, and complete mirror and headchecks before returning to your original lane and then cancel signal.

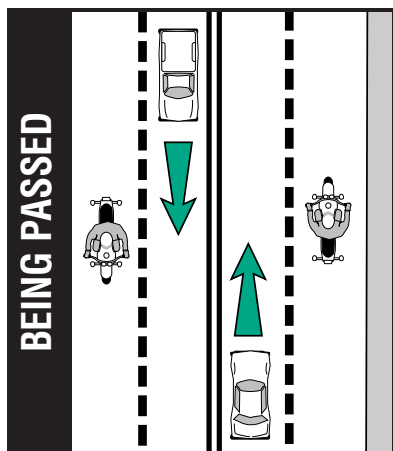
Remember, passes must be completed within posted speed limits, and only where permitted. Know your signs and road markings!

BEING PASSED

When you are being passed from behind or by an oncoming vehicle, stay in the center portion of your lane. Riding any closer to them could put you in a hazardous situation.

Avoid being hit by:

- The other vehicle — A slight



mistake by you or the passing driver could cause a sideswipe.

- Extended mirrors — Some drivers forget that their mirrors hang out farther than their fenders.
- Objects thrown from windows — Even if the driver knows you're there, a passenger may not see you and might toss something on you or the road ahead of you.
- Blasts of wind from larger vehicles — They can affect your control. You have more room for error if you are in the middle portion when hit by this blast than if you are on either side of the lane.

Do not move into the portion of the lane farthest from the passing vehicle. It might invite the other driver to cut back into your lane too early.

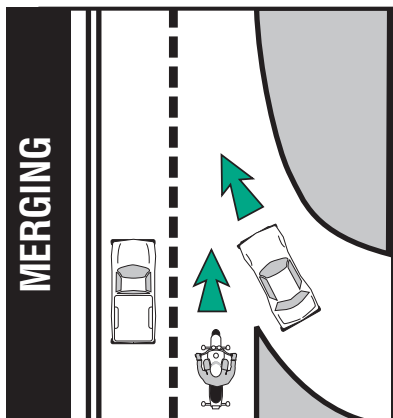
LANE SHARING

Cars and motorcycles cannot share a lane safely. Lane sharing is permitted only for two motorcycles.

Riding between rows of stopped or moving cars in the same lane can leave you vulnerable to the unexpected. A hand could come out of a window; a door could open; a car could turn suddenly. Discourage lane sharing by others. Keep a center-portion position whenever drivers might be tempted to squeeze by you. Drivers are most tempted to do this:

- In heavy, bumper-to-bumper traffic.
- When they want to pass you.
- When you are preparing to turn at an intersection.

- When you are getting in an exit lane or leaving a highway.

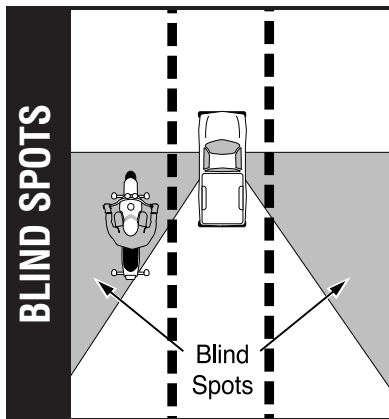


MERGING CARS

Drivers on an entrance ramp may not see you on the highway. Give them plenty of room. Change to another lane if one is open. If there is no room for a lane change, adjust speed to open up space for the merging driver.

CARS ALONGSIDE

Do not ride next to cars or trucks in other lanes if you do not have to. You might be in the blind spot of a car in the next lane, which could switch into your lane without warning. Cars in the next lane also block your escape if you come upon danger in your own lane. Speed up or drop back to find a place clear of traffic on both sides.



SEE

Good experienced riders remain aware of what is going on around them. They improve their riding strategy by using SEE, a three-step process used to make appropriate judgments, and apply them correctly in different traffic situations:

- Search
- Evaluate
- Execute

Let's examine each of these steps.

4 Test Yourself

Usually, a good way to handle tailgaters is to:

- A. Change lanes and let them pass.
- B. Use your horn and make obscene gestures.
- C. Speed up to put distance between you and the tailgater.
- D. Ignore them.

Answer - page 42

SEARCH

Search aggressively ahead, to the sides and behind to avoid potential hazards even before they arise. How assertively you search, and how much time and space you have, can eliminate or reduce harm. Focus even more on finding potential escape routes in or around intersections, shopping areas and school and construction zones.

Search for factors such as:

- Oncoming traffic that may turn left in front of you.
- Traffic coming from the left and right.
- Traffic approaching from behind.
- Hazardous road conditions.

Be especially alert in areas with limited visibility. Visually “busy” surroundings could hide you and your motorcycle from others.

EVALUATE

Think about how hazards can interact to create risks for you. Anticipate potential problems and have a plan to reduce risks.

- Stationary Objects — potholes, guardrails, bridges, telephone poles and trees won’t move into your path but may influence your riding strategy.
- Traffic control devices — Look for traffic signals, including regulatory signs, warning signs, and pavement markings, to help

you evaluate circumstances ahead.

- Other vehicles, pedestrians and animals — may suddenly enter your path and increase the likelihood of a crash.

Think about your time and space requirements in order to maintain a margin of safety. You must leave yourself time to react if an emergency arises.

EXECUTE

Carry out your decision.

To create more space and minimize harm from any hazard:

- Communicate your presence with lights and/or horn.
- Adjust your speed by accelerating, stopping or slowing.
- Adjust your position and/or direction.

Apply the old adage “one step at a time” to handle two or more hazards. Adjust speed to permit two hazards to separate. Then deal with them one at a time as single hazards. Decision making becomes more complex with three or more hazards. Weigh consequences of each and give equal distance to the hazards.

In potential high risk areas, such as intersections, shopping areas, school and construction zones, cover the clutch and both brakes to reduce the time you need to react.

INTERSECTIONS

The greatest potential for conflict between you and other traffic is at intersections. An intersection can be in the middle of an urban area or at a driveway on a residential street — anywhere traffic may cross your path of travel. Over one-half of motorcycle/car crashes are caused by drivers entering a rider's right-of-way. Cars that turn left in front of you, including cars turning left from the lane to your right, and cars on side streets that pull into your lane, are the biggest dangers. Your use of SEE [p. 16-18] at intersections is critical.

There are no guarantees that others see you. Never count on “eye contact” as a sign that a driver will yield. Too often, a driver looks right at a motorcyclist and still fails to “see” him. The only eyes that you can count on are your own. If a car can enter your path, assume that it will. Good riders are always “looking for trouble” — not to get into it, but to stay out of it.

Increase your chances of being seen at intersections. Ride with your headlight on in a lane position that provides the best view of oncoming traffic. Provide a space cushion around the motorcycle that permits you to take evasive action.

As you approach the intersection, select a lane position to increase your visibility to the driver. Cover the clutch and both brakes to reduce reaction time.

Reduce your speed as you approach an intersection. After you have entered the intersection, move away from vehicles preparing to turn.

Do not radically change speed or position. The driver might think that you are preparing to turn.

BLIND INTERSECTIONS

If you approach a blind intersection, move to the portion of the lane that will bring you into another driver's field of vision at the earliest possible moment. In this picture, the rider has moved to the left portion of the lane — away from the parked car — so the driver on the cross street can see him as soon as possible.

Remember, the key is to see as much as possible and remain visible to others while protecting your space.

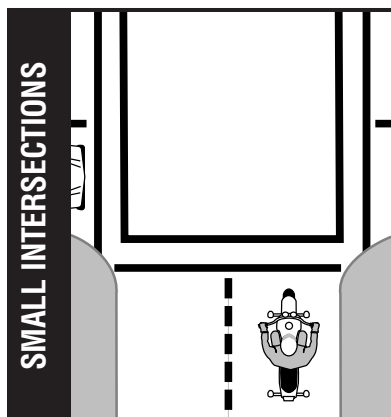
5

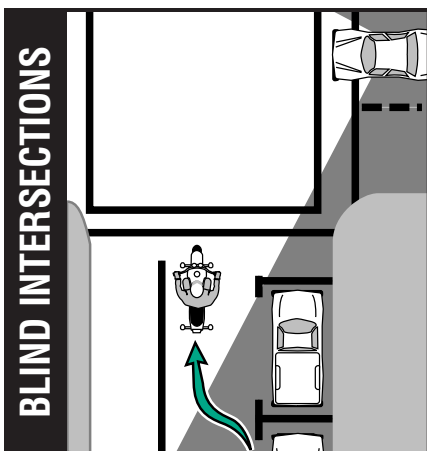
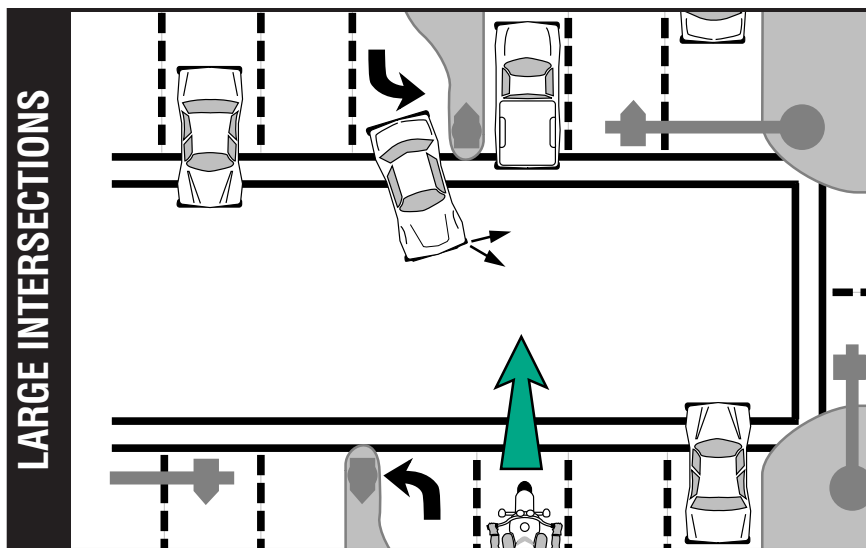
Test Yourself

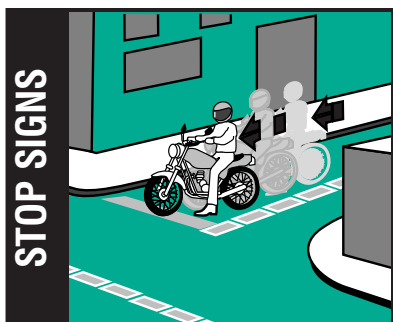
To reduce your reaction time, you should:

- A. Ride slower than the speed limit.
- B. Cover the clutch and the brakes.
- C. Shift into neutral when slowing.
- D. Pull in the clutch when turning.

Answer - page 42





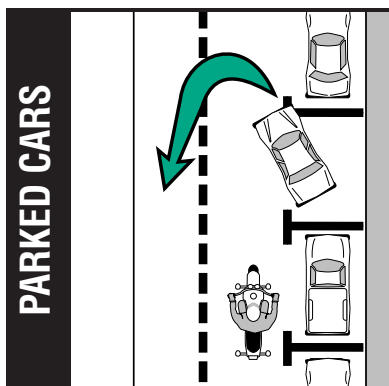


If you have a stop sign or stop line, stop there first. Then edge forward and stop again, just short of where the cross-traffic lane meets your lane. From that position, lean your body forward and look around buildings, parked cars, or bushes to see if anything is coming. Just make sure your front wheel stays out of the cross lane of travel while you're looking.

PASSING PARKED CARS

When passing parked cars, stay toward the left of your lane. You can avoid problems caused by doors opening, drivers getting out of cars, or people stepping from between cars. If oncoming traffic is present, it is usually best to remain in the center-lane position to maximize your space cushion.

A bigger problem can occur if the driver pulls away from the curb without



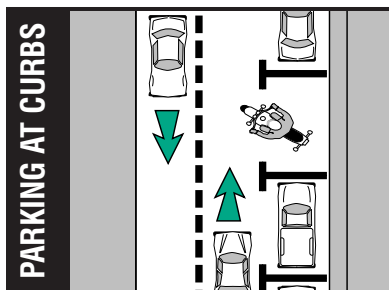
checking for traffic behind. Even if he does look, he may fail to see you.

In either event, the driver might cut into your path. Slow down or change lanes to make room for someone cutting in.

Cars making a sudden U-turn are the most dangerous. They may cut you off entirely, blocking the whole roadway and leaving you with no place to go. Since you cannot tell what a driver will do, slow down and get the driver's attention. Sound your horn and continue with caution.

PARKING AT THE ROADSIDE

Park at a 90° angle to the curb with your rear wheel touching the curb.



6

Test Yourself

Making eye contact with other drivers:

- A. Is a good sign they see you.
- B. Is not worth the effort it takes.
- C. Doesn't mean that the driver will yield.
- D. Guarantees that the other driver will yield to you.

Answer - page 42

INCREASING CONSPICUITY

In crashes with motorcyclists, drivers often say they never saw the motorcycle. From ahead or behind, a motorcycle's outline is much smaller than a car's. Also, it is hard to see something you are not looking for, and most drivers are not looking for motorcycles. More likely, they are looking through the skinny, two-wheeled silhouette in search of cars that may pose a problem to them.

Even if a driver does see you coming, you are not necessarily safe. Smaller vehicles appear farther away, and seem to be traveling slower than they actually are. It is common for drivers to pull out in front of motorcyclists, thinking they have plenty of time. Too often, they are wrong.

However, you can do many things to make it easier for others to recognize you and your motorcycle.

CLOTHING

Most crashes occur in broad daylight. Wear bright colored clothing to increase your chances of being seen. Remember, your body is half of the visible surface area of the rider/motorcycle unit.

Bright orange, red, yellow or green jackets or vests are your best bets for being seen. Your helmet can do more than protect you in a crash. Brightly colored helmets can also help others see you.

Any bright color is better than drab or dark colors. Reflective, bright colored clothing (helmet and jacket or vest) is best.

Reflective material on a vest and on the sides of the helmet will help drivers coming from the side spot you.

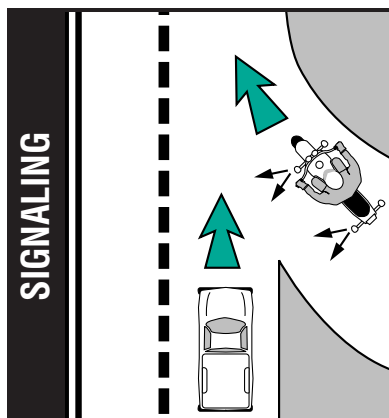
Reflective material can also be a big help for drivers coming toward you or from behind.

HEADLIGHT

The best way to help others see your motorcycle is to keep the headlight on — at all times (motorcycles sold in the U.S. since 1978 have the headlights on automatically when running.) Studies show that, during the day, a motorcycle with its light on is twice as likely to be noticed. Use of the high beam during the day increases the likelihood that oncoming drivers will see you. Use the low beam at night and in cloudy weather.

SIGNALS

The signals on a motorcycle are similar to those on a car. They tell others what you plan to do. However, due to a rider's added vulnerability, signals are even more important. Use them anytime you plan to change lanes or turn. Use them even when you think no one else is around. It's the car you do not see that is going to give you the most trouble. Your



signal lights also make you easier to spot. That is why it is a good idea to use your turn signals even when what you plan to do is obvious.

When you enter onto a freeway, drivers approaching from behind are more likely to see your signal blinking and make room for you.

Turning your signal light on before each turn reduces confusion and frustration for the traffic around you. Once you turn, make sure your signal is off or a driver may pull directly into your path, thinking you plan to turn again. Use your signals at every turn so drivers can react accordingly. Do not make them guess what you intend to do.

BRAKE LIGHT

Your motorcycle's brake light is usually not as noticeable as the brake lights on a car — particularly when your taillight is on. (It goes on with the headlight.) If the situation will permit, help others notice you by flashing your brake light before you slow down. It is especially important to flash your brake light before:

- You slow more quickly than others might expect (turning off a high-speed highway).
- You slow where others may not expect it (in the middle of a block or at an alley).

If you are being followed closely, it is a good idea to flash your brake light before you slow. The tailgater may be watching you and not see something ahead that will make you slow down. This will hopefully discourage them from tailgating and warn them of hazards ahead they may not see.

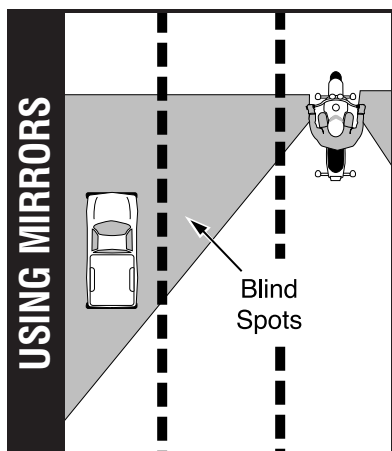
USING YOUR MIRRORS

While it is most important to keep track of what is happening ahead, you cannot afford to ignore situations behind. Traffic conditions change quickly. Knowing what is going on behind is essential for you to make a safe decision about how to handle trouble ahead.

Frequent mirror checks should be part of your normal scanning routine. Make a special point of using your mirrors:

- When you are stopped at an intersection. Watch cars coming up from behind. If the driver is not paying attention, he could be on top of you before he sees you.
- Before you change lanes. Make sure no one is about to pass you.
- Before you slow down. The driver behind may not expect you to slow, or may be unsure about where you will slow. For example, you signal a turn and the driver thinks you plan to turn at a distant intersection, rather than at a nearer driveway.

Some motorcycles have rounded (convex) mirrors. These provide a wider view of the road behind than do flat mirrors. They also make cars seem farther away than they really are. If you are not used to convex mirrors, get familiar with them. **(While you are stopped, pick out a parked car in your mirror. Form a mental image of how far away it is. Then, turn around and look at it to see how close you came.)** Practice with your mirrors until you become a good judge of distance. Even then, allow extra distance before you change lanes.



HEAD CHECKS

Checking your mirrors is not enough. Motorcycles have “blind spots” like cars. Before you change lanes, turn your head, and look to the side for other vehicles.

On a road with several lanes, check the far lane and the one next to you. A driver in the distant lane may head for the same space you plan to take. Frequent head checks should be your normal scanning routine, also. Know what is happening all around you.

HORN

Be ready to use your horn to get someone's attention quickly.

It is a good idea to give a quick beep before passing anyone that may move into your lane.

Here are some situations:

- A driver in the lane next to you is driving too closely to the vehicle ahead and may want to pass.
- A parked car has someone in the driver's seat.
- Someone is in the street, riding a bicycle or walking.

In an emergency, press the horn button loud and long. Be ready to stop or swerve away from the danger.

Keep in mind that a motorcycle's horn is not as loud as a car's, therefore, use it, but do not rely on it. Other strategies may be appropriate along with the horn.

RIDING AT NIGHT

At night it is harder for you to see and be seen. Picking your headlight or taillight out of the car lights around you is not easy for other drivers. To compensate, you should:

Reduce Your Speed — Ride even slower than you would during the day — particularly on roads you don't know well. This will increase your chances of avoiding a hazard.

Increase Distance — Distances are harder to judge at night than during the day. Your eyes rely upon shadows and light contrasts to determine how far away an object is and how fast it is coming. These contrasts are missing or distorted under artificial lights at night. Open up a three-second following distance or more. And allow more distance to pass and be passed.

Use the Car Ahead — The headlights of the car ahead can give you a better view of the road than even your high beam can. Its taillights bouncing up and down can alert you to bumps or rough pavement.

Use Your High Beam — Get all the light you can. Use your high beam whenever you are not following or meeting a car.

Be visible, wear reflective materials when riding at night.

Be Flexible About Lane Position.

Change to whatever portion of the lane is best able to help you see, be seen, and keep an adequate space cushion.

CRASH AVOIDANCE

No matter how careful you are, there will be times when you find yourself in a tight spot. Your chances of getting out safely depend on your ability to react quickly and properly. Often, a crash occurs because a rider is not prepared or skilled in crash-avoidance maneuvers.

Know when and how to stop or swerve, two skills critical to avoiding a crash. It is not always desirable or possible to stop quickly to avoid an obstacle. Riders must also be able to swerve around an obstacle. Determining the skill necessary for the situation is important as well.

Studies show that most riders involved in crashes:

- Underbrake the front tire and overbrake the rear.
- Did not separate braking from swerving or did not choose swerving when it was appropriate.

The following information offers some good advice.

QUICK STOPS

To stop quickly, apply both brakes at the same time. Do not be shy about using the front brake, but do not “grab” it, either. Squeeze the brake lever firmly and progressively. If the front wheel locks, release the front brake immediately

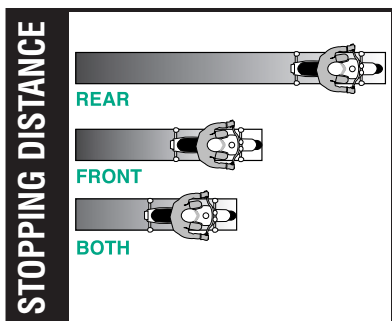
7

Test Yourself

Reflective clothing should:

- A. Be worn at night.
- B. Be worn during the day.
- C. Not be worn.
- D. Be worn day and night.

Answer - page 42



then reapply it firmly. At the same time, press down on the rear brake. If you accidentally lock the rear brake on a good traction surface, keep it locked until you have completely stopped. Even with a locked rear wheel, you can control the motorcycle on a straightaway **if it is upright and going in a straight line.**

Always use both brakes at the same time to stop. The front brake can provide 70% or more of the potential stopping power.

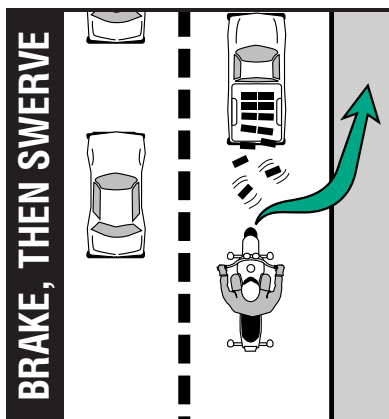
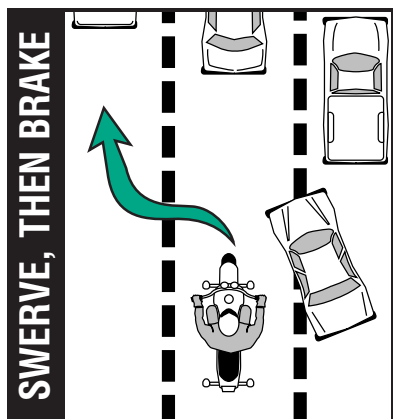
If you must stop quickly while turning or riding a curve, the best technique is to straighten the bike upright first and then brake. However, it may not always be

possible to straighten the motorcycle and then stop. If you must brake while leaning, apply light brakes and reduce the throttle. As you slow, you can reduce your lean angle and apply more brake pressure until the motorcycle is straight and maximum brake pressure is possible. You should “straighten” the handlebars in the last few feet of stopping, the motorcycle should then be straight up and in balance.

SWERVING OR TURNING QUICKLY

Sometimes you may not have enough room to stop, even if you use both brakes properly. An object might appear suddenly in your path. Or the car ahead might squeal to a stop. The only way to avoid a crash may be to turn quickly, or swerve around it.

A swerve is any sudden change in direction. It can be two quick turns, or a rapid shift to the side. Apply a small amount of hand pressure to the handgrip located on the side of your intended direction of escape. This will cause the motorcycle to lean quickly.



The sharper the turn(s), the more the motorcycle must lean.

Keep your body upright and allow the motorcycle to lean in the direction of the turn while keeping your knees against the tank and your feet solidly on the foot rests.

Let the motorcycle move underneath you. Make your escape route the target of your vision. Press on the opposite handgrip once you clear the obstacle to return you to your original direction of travel. To swerve to the left, press the left handgrip, then press the right to recover. To swerve

to the right, press right, then left.

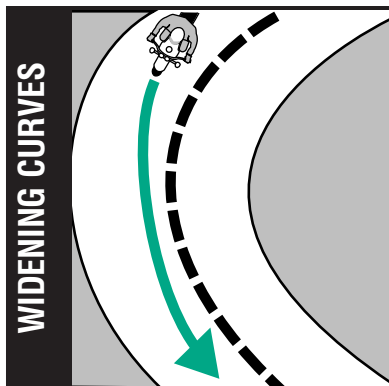
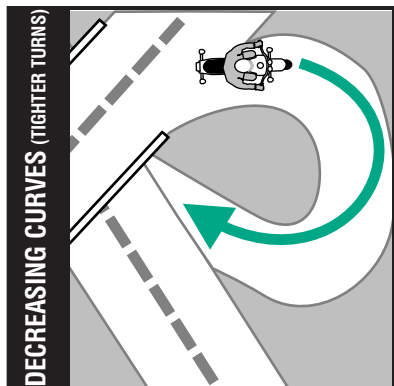
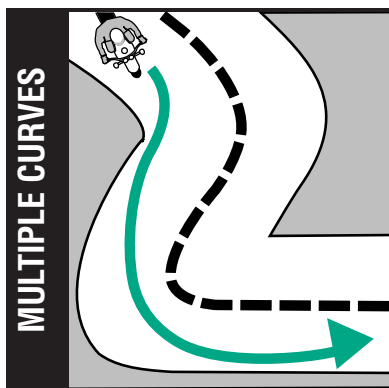
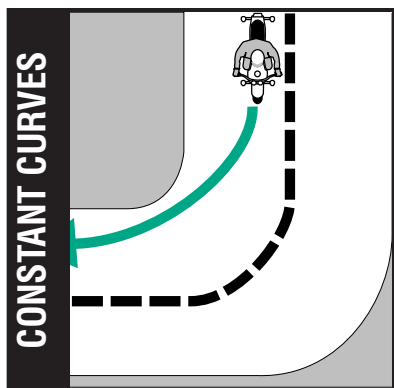
IF BRAKING IS REQUIRED, SEPARATE IT FROM SWERVING.

Brake before or after — never while swerving.

RIDING A CURVE

A primary cause of single-vehicle crashes is motorcyclists running wide in a curve or turn and colliding with the roadway or a fixed object.

Every curve is different. Be alert to



whether a curve remains constant, gradually widens, gets tighter, or involves multiple turns.

Ride within your skill level and posted speed limits.

Your best path may not always follow the curve of the road. Change lane position depending on traffic, road conditions and curve of the road. If no traffic is present, start at the outside of a curve to increase your line of sight and the effective radius of the turn. As you turn, move toward the inside of the curve, and as you pass the center, move to the outside to exit.

Another alternative is to move to the center of your lane before entering a curve — and stay there until you exit. This permits you to spot approaching traffic as soon as possible. You can also adjust for traffic “crowding” the center line, or debris blocking part of your lane.

8

Test Yourself

The best way to stop quickly is to:

- A. Use the front brake only.
- B. Use the rear brake first.
- C. Throttle down and use the front brake.
- D. Use both brakes at the same time.

Answer - page 42

HANDLING DANGEROUS SURFACES

Your chance of falling or being involved in a crash increases whenever you ride across:

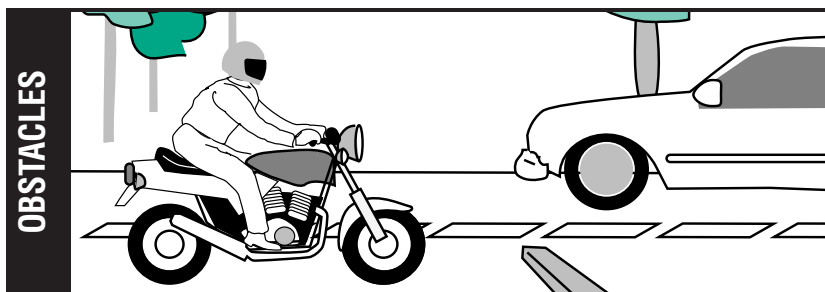
- Uneven surfaces or obstacles.
- Slippery surfaces.
- Railroad tracks.
- Grooves and gratings.

UNEVEN SURFACES AND OBSTACLES

Watch for uneven surfaces such as bumps, broken pavement, potholes, or small pieces of high way trash.

Try to avoid obstacles by slowing or going around them. If you must go over the obstacle, first, determine if it is possible. Approach it at as close to a 90° angle as possible. Look where you want to go to control your path of travel. If you have to ride over the obstacle, you should:

- Slow down as much as possible before contact.
- Make sure the motorcycle is straight.



- Rise slightly off the seat with your weight on the footpegs to absorb the shock with your knees and elbows, and avoid being thrown off the motorcycle.

- Just before contact, roll on the throttle slightly to lighten the front end.

If you ride over an object on the street, pull off the road and check your tires and rims for damage before riding any farther.

SLIPPERY SURFACES

Motorcycles handle better when ridden on surfaces that permit good traction. Surfaces that provide poor traction include:

- Wet pavement, particularly just after it starts to rain and before surface oil washes to the side of the road.

- Gravel roads, or where sand and gravel collect.

- Mud, snow, and ice.

- Lane markings, steel plates and manhole covers, especially when wet.

To ride safely on slippery surfaces:

- Reduce Speed — Slow down before you get to a slippery surface to lessen your chances of skidding. Your motorcycle needs more distance to stop. And, it is particularly important to reduce speed before entering wet curves.

- Avoid Sudden Moves — Any sudden change in speed or direction can cause a skid. Be as smooth as possible when you speed up, shift gears, turn or brake.

- Use Both Brakes — The front brake is still effective, even on a slippery surface. Squeeze the brake lever gradually to avoid locking the front wheel. Remember, gentle pressure on the rear brake.

- The center of a lane can be hazardous when wet. When it starts to rain, ride in the tire tracks left by cars. Often, the left tire track will be the best position, depending on traffic and other road conditions as well.

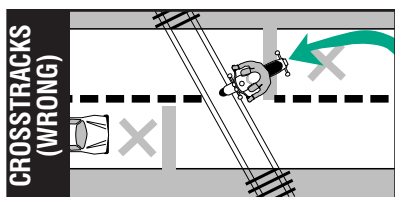
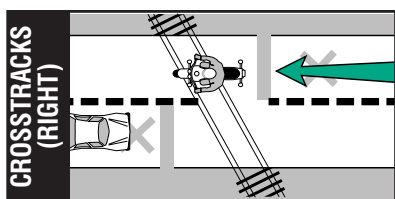
- Watch for oil spots when you put your foot down to stop or park. You may slip and fall.

- Dirt and gravel collect along the sides of the road — especially on curves and ramps leading to and from highways. Be aware of what is on the edge of the road, particularly when making sharp turns and getting on or off freeways at high speeds.

- Rain dries and snow melts faster on some sections of a road than on others. Patches of ice tend to crop up in low or shaded areas and on bridges and overpasses. Wet surfaces or wet leaves are just as slippery. Ride on the least slippery portion of the lane and reduce speed.

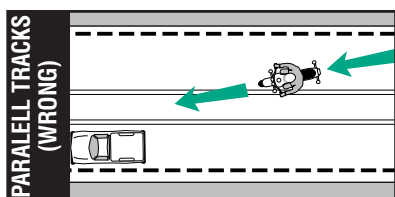
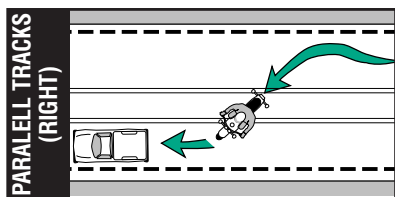
Cautious riders steer clear of roads covered with ice or snow. If you cannot avoid a slippery surface, keep your motorcycle straight up and proceed as slowly as possible. If you encounter a large surface so slippery that you must coast, or travel at a walking pace, consider letting your feet skim along the surface. If the motorcycle starts to fall, you can catch yourself. Be sure to keep

off the brakes. If possible, squeeze the clutch and coast. Attempting this maneuver at anything other than the slowest of speeds could prove hazardous.



RAILROAD TRACKS, TROLLEY TRACKS AND PAVEMENT SEAMS

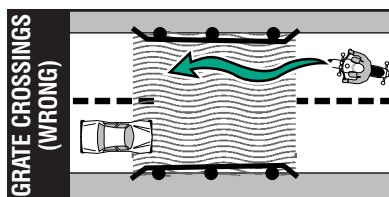
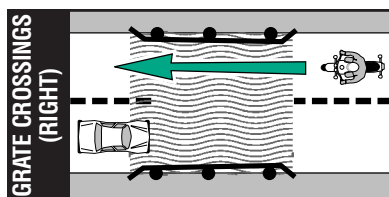
Usually it is safer to ride straight within your lane to cross tracks. Turning to take tracks head-on (at a 90° angle) can be more dangerous — your path may carry you into another lane of traffic.



For track and road seams that run parallel to your course, move far enough away from tracks, ruts, or pavement seams to cross at an angle of at least 45°. Then, make a quick, sharp turn. Edging across could catch your tires and throw you off balance.

GROOVES AND GRATINGS

Riding over rain grooves or bridge gratings may cause a motorcycle to weave. The uneasy, wandering feeling generally is not hazardous. Relax, maintain a steady speed and ride straight across. Crossing at an angle forces riders to zigzag to stay in the lane. The zigzag is far more hazardous than the wandering feeling.



9

Test Yourself

When it starts to rain it is usually best to:

- A. Ride in the center of the lane.
- B. Pull off to the side until the rain stops.
- C. Ride in the tire tracks left by cars.
- D. Increase your speed.

Answer - page 42

MECHANICAL PROBLEMS

You can find yourself in an emergency the moment something goes wrong with your motorcycle. In dealing with any mechanical problem, take into account the road and traffic conditions you face. Here are some guidelines that can help you handle mechanical problems safely.

TIRE FAILURE

You will seldom hear a tire go flat. If the motorcycle starts handling differently, it may be a tire failure. This can be dangerous. You must be able to tell from the way the motorcycle reacts. If one of your tires suddenly loses air, react quickly to keep your balance. Pull off and check the tires.

If the front tire goes flat, the steering will feel “heavy.” A front-wheel flat is particularly hazardous because it affects your steering. You have to steer well to keep your balance.

If the rear tire goes flat, the back of the motorcycle may jerk or sway from side to side.

If either tire goes flat while riding:

- Hold handlegrips firmly, ease off the throttle, and keep a straight course.
- If braking is required, however, gradually apply the brake of the tire that is not flat, if you are sure which one it is.
- When the motorcycle slows, edge to the side of the road, squeeze the clutch and stop.

STUCK THROTTLE

Twist the throttle back and forth several times. If the throttle cable is stuck, this may free it. If the throttle stays stuck immediately operate the engine cut-off switch and pull in the clutch at the same time. This will remove power from the rear wheel, though engine noise may not immediately decline. Once the motorcycle is “under control,” pull off and stop.

After you have stopped, check the throttle cable carefully to find the source of the trouble. Make certain the throttle works freely before you start to ride again.

WOBBLE

A “wobble” occurs when the front wheel and handlebars start to shake suddenly from side to side at any speed. Most wobbles can be traced to improper loading, unsuitable accessories, or incorrect tire pressure. If you are carrying a heavy load, lighten it. If you cannot, shift it. Center the weight lower and farther forward on the motorcycle. Make sure tire pressure, spring pre-load, air shocks, and dampers are at the settings recommended for that much weight. Make sure windshields and fairings are mounted properly.

Check for poorly adjusted steering; worn steering parts; a front wheel that is bent, misaligned, or out of balance; loose wheel bearings or spokes; and swingarm bearings. If none of these are determined to be the cause, have the motorcycle checked out thoroughly by a qualified professional.

Trying to “accelerate out of a wobble” will only make the motorcycle more unstable. Instead:

- Grip the handlebars firmly, but do not fight the wobble.
- Close the throttle gradually to slow down. Do not apply the brakes; braking could make the wobble worse.
- Move your weight as far forward and down as possible.
- Pull off the road as soon as you can to fix the problem.

10 *Test Yourself*

If your motorcycle starts to wobble:

- A. Accelerate out of the wobble.
- B. Use brakes gradually.
- C. Grip the handlebars firmly and close the throttle gradually.
- D. Downshift.

Answer - page 42

CHAIN PROBLEMS

A chain that slips or breaks while you are riding could lock the rear wheel and cause your cycle to skid. Chain slippage or breakage can be avoided by proper maintenance.

Slippage — If the chain slips when you try to speed up quickly or ride uphill, pull off the road. Check the chain and sprockets. Tightening the chain may help. If the problem is a worn or stretched chain or worn or bent sprockets, replace the chain, the sprockets, or both before riding again.

Breakage — You will notice an instant loss of power to the rear wheel. Close the throttle and brake to a stop.

ENGINE SEIZURE

When the engine “locks” or “freezes” it is usually low on oil. The engine’s moving parts cannot move smoothly against each other, and the engine overheats. The first sign may be a loss of engine power or a change in the engine’s sound. Squeeze the clutch lever to disengage the engine from the rear wheel. Pull off the road and stop. Check the oil. If needed, oil should be added as soon as possible or the engine will seize. When this happens, the effect is the same as a locked rear wheel. Let the engine cool before restarting.

ANIMALS

Naturally, you should do everything you safely can to avoid hitting an animal. If you are in traffic, however, remain in your lane. Hitting something small is less dangerous to you than hitting something big — like a car.

Motorcycles seem to attract dogs. If you are chased, downshift and approach the animal slowly. As you approach it, accelerate away and leave the animal behind. Do not kick at an animal. Keep control of your motorcycle, and look to where you want to go.

For larger animals (deer, elk, cattle) brake and prepare to stop, they are unpredictable.

11 *Test Yourself*

If you are chased by a dog:

- A. Kick it away.
- B. Stop until the animal loses interest.
- C. Swerve around the animal.
- D. Approach the animal slowly, then speed up.

Answer - page 42

FLYING OBJECTS

From time to time riders are struck by insects, cigarettes thrown from cars, or pebbles kicked up by the tires of the vehicle ahead. If you are wearing face protection, it might get smeared or cracked, making it difficult to see. Without face protection, an object could hit you in the eye, face, or mouth. Whatever happens, keep your eyes on the road and your hands on the handlebars. When safe, pull off the road and repair the damage.

GETTING OFF THE ROAD

If you need to leave the road to check the motorcycle (or just to rest for a while), be sure you:

- Check the roadside — Make sure the surface of the roadside is firm enough to ride on. If it is soft grass, loose sand, or if you are just not sure about it, slow way down before you turn onto it.
- Signal — Drivers behind might not expect you to slow down. Give a clear signal that you will be slowing down and changing direction. Check your mirror and make a head check before you take any action.
- Pull off the road — Get as far off the road as you can. It can be very hard to spot a motorcycle by the side of the road. You do not want someone else pulling off at the same place you are.
- Park carefully — Loose and sloped shoulders can make setting the side or center stand difficult.

CARRYING PASSENGERS AND CARGO

Only experienced riders should carry passengers or large loads. The extra weight changes the way the motorcycle handles, balances, turns, speeds up, and slows down. Before taking a passenger or heavy load on the street, practice away from traffic.

EQUIPMENT

To carry passengers safely:

- Equip and adjust your motorcycle to carry passengers.
- Instruct the passenger before you start.
- Adjust your riding technique for the added weight.

Equipment should include:

- A proper seat — large enough to hold both of you without crowding. You should not sit any farther forward than you usually do.
- Foot rests — for the passenger. Firm footing prevents your passenger from falling off and pulling you off, too.
- Protective equipment — the same protective gear recommended for operators.

Adjust the suspension to handle the additional weight. You will probably need to add a few pounds of pressure to the tires if you carry a passenger. (Check your owner's manual for appropriate settings.) While your passenger sits on the seat with you, adjust the mirror and

headlight according to the change in the motorcycle's angle.

INSTRUCTING PASSENGERS

Even if your passenger is a motorcycle rider, provide complete instructions before you start. Tell your passenger to:

- Get on the motorcycle only after you have started the engine.
- Sit as far forward as possible without crowding you.
- Hold firmly to your waist, hips, or belt.
- Keep both feet on the pegs, even when stopped.
- Keep legs away from the muffler(s), chains or moving parts.
- Stay directly behind you, leaning as you lean.
- Avoid unnecessary talk or motion.
- Also, tell your passenger to tighten his or her hold when you:
- Approach surface problems.
- Are about to start from a stop.
- Warn that you will make a sudden move.

12 Test Yourself

Passengers should:

- A. Lean as you lean.
- B. Hold on to the motorcycle seat.
- C. Sit as far back as possible.
- D. Never hold onto you.

Answer - page 42

RIDING WITH PASSENGERS

Your motorcycle will respond more slowly with a passenger on board. The heavier your passenger, the longer it will take to slow down, speed up, or turn — especially on a light motorcycle.

- Ride a little slower, especially when taking curves, corners, or bumps.
- Start slowing earlier as you approach a stop.
- Open up a larger cushion of space ahead and to the sides.
- Wait for larger gaps to cross, enter, or merge in traffic.

Warn your passenger of special conditions — when you will pull out, stop quickly, turn sharply, or ride over a bump. Turn your head slightly to make yourself understood, but keep your eyes on the road ahead.

CARRYING LOADS

Most motorcycles are not designed to carry much cargo. Small loads can be carried safely if positioned and fastened properly.

- Keep the Load Low — Fasten loads securely, or put them in saddle bags. Piling loads against a sissybar or frame on the back of the seat raises the motorcycle's center of gravity and disturbs its balance.
- Keep the Load Forward — Place the load over, or in front of, the rear axle. Tank bags keep loads forward, but use caution when loading hard or sharp objects. Make sure the tank bag does not interfere with the

handlebars or controls. Mounting loads behind the rear axle can affect how the motorcycle turns and brakes. It can also cause a wobble.

- **Distribute the Load Evenly** — Load saddlebags with about the same weight. An uneven load can cause the motorcycle to drift to one side.
- **Secure the Load** — Fasten the load securely with elastic cords (bungee cords or nets). Elastic cords with more than one attachment point per side are more secure. A tight load will not catch in the wheel or chain, causing it to lock up and skid. Rope tends to stretch and knots come loose, permitting the load to shift or fall.
- **Check the Load** — Stop and check the load every so often to make sure it has not worked loose or moved.

GROUP RIDING

If you ride with others, do it in a way that promotes safety and doesn't interfere with the flow of traffic.

KEEP THE GROUP SMALL

Small groups make it easier and safer for car drivers who need to get around them. A small number isn't separated as easily by traffic or red lights. Riders will not always be hurrying to catch up. If your group is larger than four or five riders, divide it up into two or more smaller groups.

KEEP THE GROUP TOGETHER

- **Plan** — The leader should look ahead for road changes and signal early so "the word gets back" in plenty of time. Start lane changes early

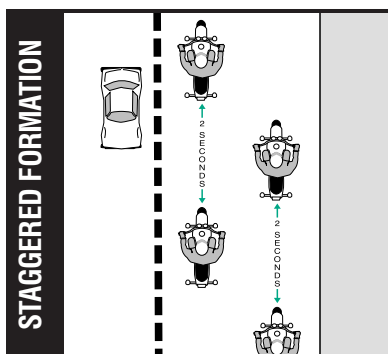
to permit everyone to complete the change.

- **Put Beginners Up Front** — Place inexperienced riders just behind the leader. That way the more experienced riders can watch them from the back.
- **Follow Those Behind** — Let the tailender set the pace. Use your mirrors to keep an eye on the person behind. If a rider falls behind, everyone should slow down a little to stay with the tailender.
- **Know the Route** — Make sure everyone knows the route. Then, if someone is separated they will not have to hurry to keep from getting lost or taking a wrong turn. Plan frequent stops on long rides.

KEEP YOUR DISTANCE

Maintain close ranks but at the same time keep a safe distance to allow each rider in the group time and space to react to hazards. A close group takes up less space on the highway, is easier to see and is less likely to be separated. However, it must be done properly.

Don't Pair Up — Never operate directly



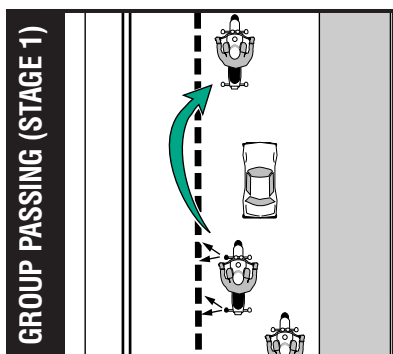
alongside another rider. There is no place to go if you have to avoid a car or something on the road. To talk, wait until you are both stopped.

Staggered Formation — This is the best way to keep ranks close yet maintain an adequate space cushion. The leader rides in the left side of the lane, while the second rider stays one second behind in the right side of the lane.

A third rider maintains in the left position, two seconds behind the first rider. The fourth rider would keep a two-second distance behind the second rider. This formation keeps the group close and permits each rider a safe distance from others ahead, behind and to the sides.

■ Passing in Formation — Riders in a staggered formation should pass one at a time.

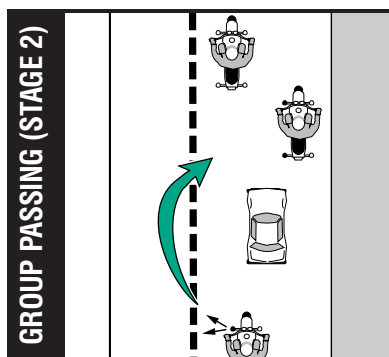
■ First, the lead rider should pull out and pass when it is safe. After passing, the leader should return to the left position and continue riding at passing speed to open room for the next rider.



■ After the first rider passes safely, the second rider should move up to the left position and watch for a safe chance to pass. After passing, this rider should return to the right position and open up room for the next rider.

Some people suggest the leader should move to the right side after passing a vehicle. This is not a good idea. It encourages the second rider to pass and cut back in before there is a large enough space cushion in front of the passed vehicle. It is simpler and safer to wait until there is enough room ahead of the passed vehicle to allow each rider to move into the same position held before the pass.

Single-File Formation — It is best to move into a single-file formation when riding curves, turning, entering or leaving a highway.



13

Test Yourself

When riding in a group, inexperienced riders should position themselves:

- A. Just behind the leader.
- B. In front of the group.
- C. At the tail end of the group.
- D. Beside the leader.

Answer - page 42

Being In Shape To Ride

Riding a motorcycle is a demanding and complex task. Skilled riders pay attention to the riding environment and to operating the motorcycle, identifying potential hazards, making good judgments, and executing decisions quickly and skillfully. Your ability to perform and respond to changing road and traffic conditions is influenced by how fit and alert you are. Alcohol and other drugs, more than any other factor, degrade your ability to think clearly and to ride safely. As little as one drink can have a significant effect on your performance.

This section looks at the risks involved in riding after drinking or using drugs. What to do to protect yourself and your fellow riders is also examined.

WHY THIS INFORMATION IS IMPORTANT

Alcohol is a major contributor to motorcycle crashes, particularly fatal crashes. Studies show that 40% to 45% of all riders killed in motorcycle crashes had been drinking. Only one-third of those riders had a blood alcohol concentration above legal limits. The rest had only a few drinks in their systems — enough to impair riding skills. In the past, drug levels have been harder to distinguish or have not been separated from drinking violations for the traffic records. But riding “under the influence” of either alcohol or drugs poses physical and legal hazards for every rider.

Drinking and drug use is as big a problem among motorcyclists as it is among automobile drivers. Motorcyclists, however, are more likely to be killed or severely injured in a crash. Injuries occur in 90% of motorcycle crashes and 33%

of automobile crashes that involve abuse of substances. On a yearly basis, 2,100 motorcyclists are killed and about 50,000 seriously injured in this same type of crash. These statistics are too overwhelming to ignore.

By becoming knowledgeable about the effects of alcohol and other drugs you will see that riding and substance abuse do not mix.

Take positive steps to protect yourself and prevent others from injuring themselves.

ALCOHOL AND OTHER DRUGS IN MOTORCYCLE OPERATION

No one is immune to the effects of alcohol or drugs. Friends may brag about their ability to hold their liquor or perform better on drugs, but alcohol or drugs make them less able to think clearly and perform physical tasks skillfully. Judgment and the decision-making processes needed for vehicle operation are affected long before legal limitations are reached.

Many over-the-counter, prescription, and illegal drugs have side effects that increase the risk of riding. It is difficult to accurately measure the involvement of particular drugs in motorcycle crashes. But we do know what effects various drugs have on the process involved in riding a motorcycle. We also know that the combined effects of alcohol and other drugs are more dangerous than either is alone.

ALCOHOL IN THE BODY

Alcohol enters the bloodstream quickly. Unlike most foods and beverages, it does not need to be digested.

Within minutes after being consumed, it reaches the brain and begins to affect the drinker. The major effect alcohol has is to slow down and impair bodily functions — both mental and physical. Whatever you do, you do less well after consuming alcohol.

BLOOD ALCOHOL CONCENTRATION

Blood Alcohol Concentration or BAC is the amount of alcohol in relation to blood in the body. Generally, alcohol can be eliminated in the body at the rate of almost one drink per hour. But a variety of other factors may also influence the level of alcohol retained. The more alcohol in your blood, the greater the degree of impairment.

Three factors play a major part in determining BAC:

- The amount of alcohol you consume.
- How quickly you drink.
- Your body weight.

Other factors also contribute to the way alcohol affects your system. Your sex, physical condition and food intake are just a few that may cause your BAC

level to be even higher. But the full effects of these are not completely known.

Alcohol may still accumulate in your body even if you are drinking at a rate of one drink per hour. Abilities and judgment can be affected by that one drink.

A 12-ounce can of beer, a mixed drink with one shot of liquor, a 5-ounce glass of wine and a 12-ounce bottle of wine cooler all contain the same amount of alcohol.

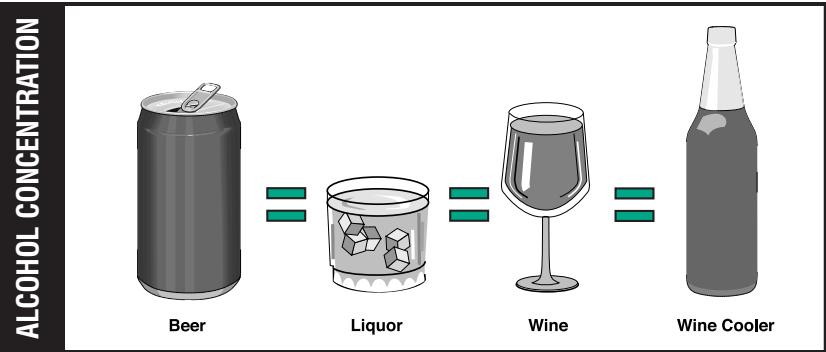
The quicker you drink, the more alcohol accumulates in your body. If you drink two drinks in an hour, at the end of that hour, at least one drink will remain in your bloodstream.

Without taking into account any of the other factors, the formula below illustrates the LEAST amount of drinks remaining in the bloodstream:

A person drinking:

- 7 drinks in 3 hours would have at least 4 drinks remaining in their system.

Total drinks consumed	# of hours since last drink	Drinks left in body



- 4 drinks in 2 hours would have at least 2 drinks remaining in their system.

There are times when a larger person may not accumulate as high a concentration of alcohol for each drink consumed. They have more blood and other bodily fluids. But because of individual differences it is better not to take the chance that abilities and judgment have not been affected. Whether or not you are legally intoxicated is not the real issue. Impairment of judgment and skills begins well below the legal limit.

ALCOHOL AND THE LAW

In New York State, a driver with a BAC of .08% or above is legally intoxicated. In other states, the legal limit may be .10%, .08%, or .05%. It does not matter how sober you may look or act. The breath or urine test usually determines whether you are operating your motorcycle legally or illegally.

The chances are greater than ever that you could be stopped when driving or operating under the influence of alcohol. Throughout the nation, law enforcement is increasing in response to the senseless deaths and injuries caused by drinking drivers and operators.

Your insurance company may refuse to pay the injury or medical costs caused by a traffic crash in which you were operating a motorcycle while under the influence of alcohol or drugs.

CONSEQUENCES OF CONVICTION

The laws of most states impose stiff penalties on drinking operators. And those penalties are mandatory, meaning

that judges must impose them.

If you are convicted of driving or operating under the influence of alcohol or drugs, you may receive any of the following penalties:

- Driving While Intoxicated (DWI) or .08% Blood Alcohol Content (BAC) – minimum 1-year license revocation; Driving While Ability Impaired by a Drug (DWAI-Drug) – 6-month suspension. Minimum 1-year revocation for conviction of these offenses committed within 10 years of any previous alcohol or drug violation.
- DWAI or .05% BAC – 90-day suspension. Minimum 6-month revocation for conviction of these offenses committed within 5 years of any previous alcohol or drug violation.
- First alcohol or drug-related violation, except Zero Tolerance, by a driver under age 21 – minimum 1-year revocation. Second violation by a driver under age 21 – minimum 1-year revocation or until 21, whichever is longer.
- Chemical test refusal – minimum 6-month revocation for most drivers; minimum 1-year revocation for a driver under 21. Chemical test refusal revocations are separate from, and in addition to, those for alcohol or drug-related violations.
- Zero Tolerance Law for drivers under 21, (BAC .02% to .07%) – First violation, 6-month suspension. Second violation, minimum 1-year revocation or until 21, whichever is longer.

- **Driving Under the Influence (DUI)** conviction outside New York State – For drivers over 21 years old: 90-day revocation for alcohol; 6-month suspension for drug. For drivers under 21: 1-year revocation for alcohol or drug.

- The court must levy a mandatory fine in addition to a license revocation or suspension for an alcohol or drug conviction. Depending on the conviction, the fine will be from \$300 to \$10,000. A Zero Tolerance Law finding will result in a civil penalty of at least \$125.

- **Community Service** – such as picking up litter along the highway, washing cars in the motor-vehicle pool, or working at an emergency ward.

- **Other costs** – including lawyer's fees, time lost from work due to court appearances or attendance in alcohol/drug-education programs, public transportation while your license is revoked or suspended, higher insurances rates for years, and being known as a "drunk driver" in your family and community.

The law and consequences of conviction for driving while intoxicated or ability impaired in New York State are summarized in the **"ALCOHOL AND OTHER DRUGS"** section of the NYS Driver's Manual.

MINIMIZE THE RISKS

Your ability to judge how well you are riding is affected first. Although you may be performing more and more poorly, you think you are doing better and better. The result is that you ride confidently, taking greater and greater risks. Minimize the risks of drinking and riding by taking steps before you drink. Control your drinking or control your motorcycle driving or riding.

DON'T DRINK

Don't Drink — Once you start, your resistance becomes weaker.

Setting a limit or pacing yourself are poor alternatives at best. Your ability to exercise good judgment is one of the first things affected by alcohol. Even if you have tried to drink in moderation, you may not realize to what extent your skills have suffered from alcohol's fatiguing effects.

Or, Don't Ride — If you haven't controlled your drinking, you must control your driving and riding.

- **Leave the motorcycle home** — so you won't be tempted to operate it. Arrange another way to get home.
- **Wait** — If you exceed your limit, wait until your system eliminates the alcohol and its fatiguing effects.

14

Test Yourself

If you wait an hour for each drink before riding:

- A. You cannot be arrested for drinking and riding.
- B. Your riding skills will not be affected.
- C. Side effects from the drinking may still remain.
- D. You will be okay as long as you ride slowly.

STEP IN TO PROTECT FRIENDS

People who have had too much to drink are unable to make a responsible decision. It is up to others to step in and keep them from taking too great a risk. No one wants to do this — it's uncomfortable, embarrassing and thankless. You are rarely thanked for your efforts at the time. But the alternatives are often worse.

There are several ways to keep friends from hurting themselves:

- Arrange a safe ride — Provide alternative ways for them to get home.
- Slow the pace of drinking — Involve them in other activities.
- Keep them there — Use any excuse to keep them from getting on their motorcycle. Serve them food and coffee to pass the time. Explain your concerns for their risks of getting arrested or hurt, or hurting someone else.
- Get friends involved — Use peer pressure from a group of friends to intervene.

It helps to enlist support from others when you decide to step in. The more people on your side, the easier it is to be firm and the harder it is for the rider to resist. While you may not be thanked at the time, you will never have to say, "If only I had..."

FATIGUE

Operating a motorcycle is more tiring than driving a car. On a long trip, you'll tire sooner than you would in a car. Avoid riding when tired. Fatigue can affect your control of the motorcycle.

- Protect yourself from the elements — Wind, cold, and rain make you tire quickly. Dress warmly. A windshield is worth its cost if you plan to ride long distances.
- Limit your distance — Experienced operators seldom try to ride more than about six hours a day.
- Take frequent rest breaks — Stop, and get off the motorcycle at least every two hours.
- Don't drink or use drugs — Artificial stimulants often result in extreme fatigue or depression when they start to wear off. Drivers and riders are unable to concentrate on the task at hand.

Earning Your License

Knowledge And Skill

Safe riding requires knowledge and skill. Licensing tests are the best measurement of the skills necessary to operate safely in traffic. Assessing your own skills is not enough. People often overestimate their own abilities. It's even harder for friends and relatives to be totally honest about your skills. Licensing exams are designed to be scored more objectively.

To earn your license, you must pass a knowledge test and an on-cycle skill test. Knowledge test questions are based on information, practices, and ideas from this manual. They require that you know and understand road rules and safe riding practices. An on-cycle skill test will either be conducted in an actual traffic environment or in a controlled, off-street area.

KNOWLEDGE TEST

(Sample Questions)

1. It is MOST important to flash your brake light when:

- A. Someone is following too closely.
- B. You will be slowing suddenly.
- C. There is a stop sign ahead.
- D. Your signals are not working.

2. The FRONT brake supplies how much of the potential stopping power?

- A. About one-quarter.
- B. About one-half.
- C. About three-quarters.
- D. All of the stopping power.

3. To swerve correctly:

- A. Shift your weight quickly.
- B. Turn the handlebars quickly.

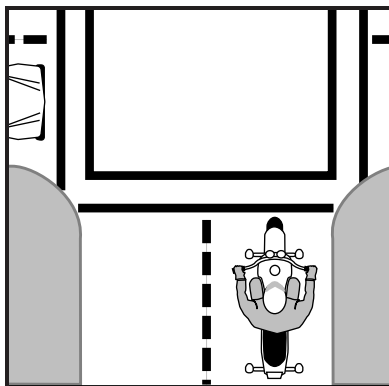
- C. Press the handgrip in the direction of the turn.
- D. Press the handgrip in the opposite direction of the turn.

4. If a tire goes flat while riding, and you must stop, it is usually best to:

- A. Relax on the handlegrips.
- B. Shift your weight toward the good tire.
- C. Brake on the good tire and steer to the side of the road.
- D. Use both brakes and stop quickly.

5. The car below is waiting to enter the intersection. It is best to:

- A. Make eye contact with the driver.
- B. Reduce speed and be ready to react.
- C. Maintain speed and position.
- D. Maintain speed and move right.



Answers to the above Knowledge test:
1-B, 2-C, 3-C, 4-C, 5-B

Answers to Test Yourself (previous pages)

1-C, 2-D, 3-D, 4-A, 5-B
6-C, 7-D, 8-D, 9-C, 10-C,
11-D, 12-A, 13-A, 14-C

ON-CYCLE SKILL TEST

Basic vehicle control and crash-avoidance skills are included in on-cycle tests to determine your ability to handle normal and hazardous traffic situations.

You may be tested for your ability to:

- Know your motorcycle and your riding limits.
- Accelerate, brake, and turn safely.
- See, be seen and communicate with others.
- Adjust speed and position to the traffic situation.
- Stop, turn and swerve quickly.
- Make critical decisions and carry them out.

Examiners may score on factors related to safety such as:

- Selecting safe speeds to perform maneuvers.

- Choosing the correct path and staying within boundaries.
- Completing normal and quick stops.
- Completing normal and quick turns, or swerves.

TO RECEIVE A MOTORCYCLE LICENSE WITH FULL PRIVILEGES, MOST STATES REQUIRE THAT MANEUVERS BE PERFORMED AS DESIGNED.

On-motorcycle skill tests are not designed for sidecars or three-wheeled vehicles. Those vehicles maneuver differently than a two-wheeled motorcycle. Depending on the state, an examiner may follow you on a car test-route. Restrictions (sidecar, three-wheeled vehicle) may be added until completion of a two-wheeled motorcycle test.

Diagrams and drawings used in this manual are for reference only and are not to correct scale for size of vehicles and distances.

Motorcycles Make Sense So Does Professional Training

Motorcycles are inexpensive to operate, fun to ride and easy to park. Unfortunately, many riders never learn the critical skills needed to ride safely.

Professional training prepares beginning and experienced riders for traffic situations in the real world. Motorcycle RiderCourses® teach and improve such skills as:

- Effective turning
- Braking maneuvers
- Protective apparel selection
- Obstacle avoidance
- Traffic strategies
- Maintenance

For the location of the basic or experienced Motorcycle RiderCourse® nearest you in New York State call toll-free: 800-446-9227



The Motorcycle Safety Foundation's purpose is improving safety of motorcycles on the nation's streets and highways. In an attempt to reduce motorcycle accidents and injuries, the Foundation has programs in rider education, licensing improvement, public information and statistics. These programs are designed for both motorcyclists and motorists. A national not-for-profit organization, MSF is sponsored by the U.S. motorcycle distributors or manufacturers: BMW, Ducati, Harley-Davidson, Honda, Kawasaki, KTM, Piaggio/Vespa, Suzuki, Vengeance, Victory and Yamaha.

The information contained in this publication is offered for the benefit of those who have an interest in riding motorcycles. The information has been compiled from publications, interviews and observations of individuals and organizations familiar with the use of motorcycles, accessories, and training. Because there are many differences in product design, riding styles, Federal, State and local laws, there may be organizations and individuals who hold differing opinions. Consult your local regulatory agencies for information concerning the operation of motorcycles in your area. Although the Motorcycle Safety Foundation will continue to research, field test and publish responsible viewpoints on the subject, it disclaims any liability for the views expressed herein.

*Content & Illustrations courtesy of
Motorcycle Safety Foundation*

*2 Jenner Street, Suite 150, Irvine, CA 92618-3806
<http://www.msf-usa.org>*

Revised **May 2004**

Motorcycle Safety Program Rider Education



Rider education is one part of a comprehensive motorcycle safety program supported by the Department of Motor Vehicles. To locate the Motorcycle Safety Foundation Rider Course nearest you, call 1-800-446-9227, or visit the web site at www.msf-usa.org

MOTORCYCLE SAFETY FOUNDATION - MOTORCYCLE RIDER COURSES:

For many people, motorcycling is a fun and energy-efficient means of transportation or recreation. However, motorcycling requires skill, concentration and reasonable precautions. Although it is possible to ride a motorcycle on your own, trial and error is a tough teacher of motorcycling skills. That is why nearly all motorcycle groups have endorsed the Motorcycle Safety Foundation's Motorcycle RiderCourses®: the Basic RiderCourse® (BRC) for beginning riders and the Experienced RiderCourse® (ERC) for advanced riding skills.

THE COURSE

The BRC is designed for beginning riders. It was developed by the Motorcycle Safety Foundation and approved by the New York State Department of Motor Vehicles. It consists of a combined 16 hours classroom and on-motorcycle instruction including the following:

1. Preparing to ride.
2. Turning, shifting and braking.
3. Street strategies.
4. Special situations.
5. Increasing riding skills.
6. Maintenance and insurance.

INSTRUCTORS

Instructors for the course are all certified by the Motorcycle Safety Foundation. All are motorcycle riders and have completed 80+ hours of instructor training.

PROVIDED FOR YOU

The BRC is taught using lightweight (100 - 350cc) motorcycles provided for class use. These will be used off-street only.

YOU PROVIDE

Students provide the following protective clothing:

1. Boots with walking heels, high enough to cover ankles;
2. Long pants of denim or other heavy material;
3. Leather gloves - unlined but not too thin;
4. Long-sleeved jacket or shirt, made from denim or other heavy material;
5. Eye protection;
6. USDOT-approved motorcycle helmet. Some training sites have loaner helmets available, check with the site for information.

WAIVER OF SKILLS TEST

The motorcycle skills test, ordinarily required for a Class M license, may be waived if a student successfully completes an approved basic rider (BRC) course at a Motorcycle Association of New York State training site. To be eligible for the motorcycle road test waiver, you must also possess a current and valid New York State driver license and a motorcycle learner's permit. The BRC, as offered through the Motorcycle Association of New York State, Inc., also provides point and insurance premium reduction benefits.

GUIDE TO LIMITED USE MOTORCYCLE (MOPEDS) OPERATION			
Class	A	B	C
Top speed range mph (km/h)	Over 30 to 40 (Over 48 to 64)	Over 20 to 30 (over 32 to 48)	20 or less (32 or less)
Type of license or learner permit required ¹	M	ANY CLASS ⁴	ANY CLASS ⁴
Registration required	YES (A Plate)	YES (B Plate)	YES (C Plate)
Headlight to be on when operating	YES	YES	YES
Helmet & eye protection required when operating ⁵	YES	YES	Recommended
Where operation is permitted	Any Traffic Lane Only ¹ & Shoulder	Right Hand Lane Only ¹ & Shoulder	Right Hand Lane or Shoulder
Mandatory insurance required	YES	YES	Recommended ²
Safety responsibility ³ applies	YES	YES	YES
Annual inspection required	YES	Recommended	Recommended
Title required	NO	NO	NO

¹Except when making a left hand turn.

²If a Class C limited use motorcycle is used in a rental business, insurance is mandatory.

³Safety responsibility is the requirement to pay for or post security for damage or personal injury you may cause in a traffic crash.

⁴Usual learner permit and junior license restrictions apply.

⁵Motorcyclists must wear approved motorcycle helmets, as defined by USDOT federal motor vehicle safety

standards (FMVSS 218). To improve the motorcyclist's visibility, the DMV recommends that helmets have at least four square inches of reflective material on both sides. Motorcyclists must also wear approved eye protection, even if the motorcycle is equipped with a windshield. Prescription or made-to-order safety glasses may be used if the user can present written certification that they meet DMV standards. The eye protection must be manufactured in conformity with the regulations issued by the Vehicle Equipment Safety Commission (VESC-8).

NEW YORK STATE'S NEW ENHANCED DRIVER LICENSE

**Motorcyclists can get an
Enhanced Motorcycle License too!**



**For more information visit:
nysdmv.com**

DO YOUR BIKE UP WHOLE HOG



**Now it's easy to let the world know just how special your bike is.
Order your plates at: nysdmv.com, call 1-(518) 402-4838 or visit any DMV office.**

